



Istruzioni per l'uso e l'installazione

Cappa



Instructions for use and installation

Cooker Hood



Mode d'emploi et installation

Hotte de Cuisine



Bedienungsanleitung und Einrichtung

Dunstabzugshaube

FSW 918 TC W BK XS-CH
FSW 918 TC W WH XS-CH

INDICE

IT

CONSIGLI E SUGGERIMENTI.....	3
CARATTERISTICHE.....	4
INSTALLAZIONE	6
USO.....	9
MANUTENZIONE	11

INDEX

EN

RECOMMENDATIONS AND SUGGESTIONS	14
CHARACTERISTICS	15
INSTALLATION.....	17
USE	20
MAINTENANCE	22

SOMMAIRE

FR

CONSEILS ET SUGGESTIONS.....	25
CARACTERISTIQUES.....	26
INSTALLATION.....	28
UTILISATION.....	31
ENTRETIEN.....	33

INHALTSVERZEICHNIS

DE

EMPFEHLUNGEN UND HINWEISE	36
CHARAKTERISTIKEN.....	37
MONTAGE	39
BEDIENUNG.....	42
WARTUNG.....	44

RECOMMENDATIONS AND SUGGESTIONS

⚠ The Instructions for Use apply to several versions of this appliance. Accordingly, you may find descriptions of individual features that do not apply to your specific appliance.

INSTALLATION

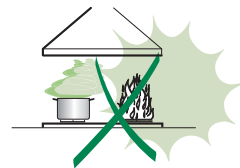
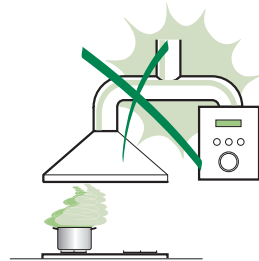
- The manufacturer will not be held liable for any damages resulting from incorrect or improper installation.
- The minimum safety distance between the cooker top and the extractor hood is 650 mm (some models can be installed at a lower height, please refer to the paragraphs on working dimensions and installation).
- Check that the mains voltage corresponds to that indicated on the rating plate fixed to the inside of the hood.
- For Class I appliances, check that the domestic power supply guarantees adequate earthing.
Connect the extractor to the exhaust flue through a pipe of minimum diameter 120 mm. The route of the flue must be as short as possible.
- Do not connect the extractor hood to exhaust ducts carrying combustion fumes (boilers, fireplaces, etc.).
- If the extractor is used in conjunction with non-electrical appliances (e.g. gas burning appliances), a sufficient degree of aeration must be guaranteed in the room in order to prevent the backflow of exhaust gas. The kitchen must have an opening communicating directly with the open air in order to guarantee the entry of clean air. When the cooker hood is used in conjunction with appliances supplied with energy other than electric, the negative pressure in the room must not exceed 0,04 mbar to prevent fumes being drawn back into the room by the cooker hood.
- In the event of damage to the power cable, it must be replaced by the manufacturer or by the technical service department, in order to prevent any risks.


USE

- The extractor hood has been designed exclusively for domestic use to eliminate kitchen smells.
- Never use the hood for purposes other than for which it has been designed.
- Never leave high naked flames under the hood when it is in operation.
- Adjust the flame intensity to direct it onto the bottom of the pan only, making sure that it does not engulf the sides.
- Deep fat fryers must be continuously monitored during use: overheated oil can burst into flames.
- Do not flambè under the range hood; risk of fire
- This appliance is not intended for use by persons (including children) with reduced physical, sensory or mental capabilities, or lack of experience and knowledge, unless they have been given supervision or instruction concerning use of the appliance by a person responsible for their safety.
- Children should be supervised to ensure that they do not play with the appliance.
- "CAUTION: Accessible parts may become hot when used with cooking appliances."

MAINTENANCE

- Switch off or unplug the appliance from the mains supply before carrying out any maintenance work.
- Clean and/or replace the Filters after the specified time period (Fire hazard).
- Clean the hood using a damp cloth and a neutral liquid detergent.



The symbol  on the product or on its packaging indicates that this product may not be treated as household waste. Instead it shall be handed over to the applicable collection point for the recycling of electrical and electronic equipment. By ensuring this product is disposed of correctly, you will help prevent potential negative consequences for the environment and human health, which could otherwise be caused by inappropriate waste handling of this product. For more detailed information about recycling of this product, please contact your local city office, your household waste disposal service or the shop where you purchased the product.

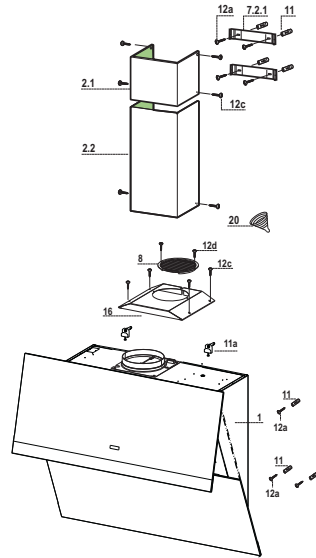
CHARACTERISTICS

Components

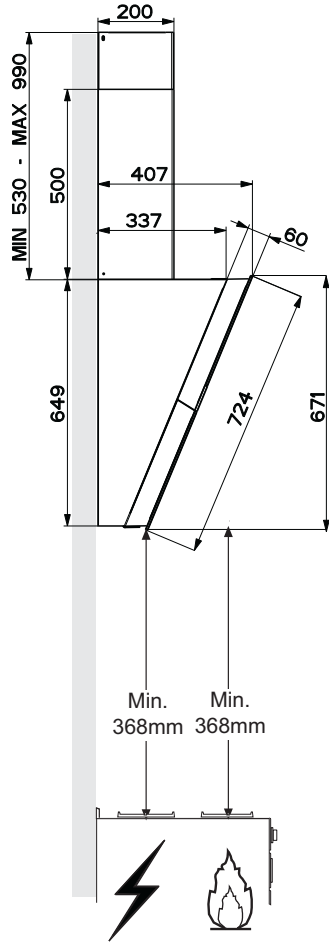
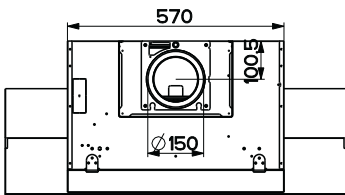
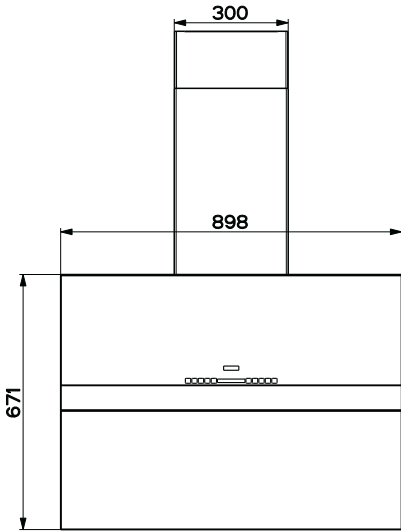
Ref.	Q.ty	Product components
1	1	Cooker hood with control unit, lights, blower unit, filters
2.1	1	Upper chimney
2.2	1	Lower chimney
8	1	Air outlet grid
16	1	Cover for recycling version
20	1	Sucker

Ref.	Q.ty	Installation components
7.2.1	2	Fixing brackets for upper chimney
11	6	Plugs
11a	2	Plugs SB 12/10
12a	6	Screws 4,2 x 44,4
12c	10	Screws 2,9 x 6,5
12e	2	Screws 2,9 x 9,5

Q.ty	Documentation
1	Instruction booklet

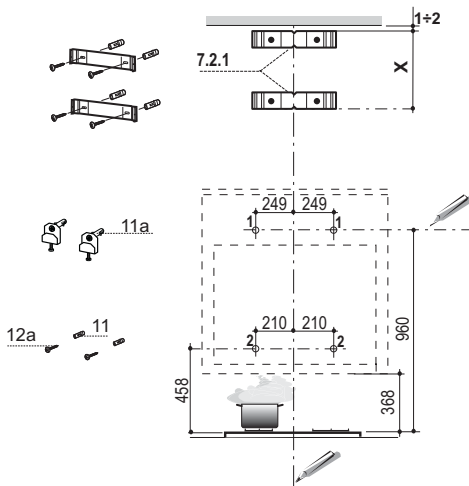


Dimensions



INSTALLATION

Wall drilling and bracket fixing

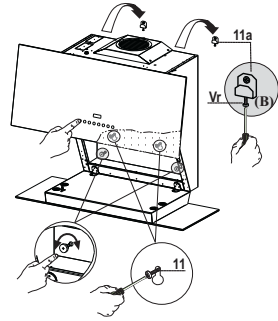


As a first step, proceed with the following drawings:

- a vertical line up to the ceiling or up to the upper limit, at the centre of the area in which the hood is to be fitted;
- a horizontal line at a minimum 960 mm above the cooker top.
- Mark a point (1) on the horizontal line, 249 mm to the right of the vertical reference line.
- Repeat this operation on the other side, checking that the two marks are levelled.
- Mark a reference point (2) as indicated at 210 mm from the vertical reference line and 458 mm above the cooker top.
- Repeat this operation on the other side, checking that the two marks are levelled.
- Drill at the marked points (1), using a \varnothing 12 mm drill bit.
- Drill at the marked point (2), using a \varnothing 8 mm drill bit.
- Insert the bracket plugs **11a** into the holes (1) and tighten the screws.
- Insert plug **11** into hole (2).
- Place bracket **7.2.1** on the wall, about 1-2 mm from the ceiling or from the upper limit, aligning the centre (notch) with the vertical reference line.
- Mark the wall at the centres of the bracket holes.
- Place the bracket **7.2.1** on the wall at X mm below the first bracket (X = height of the upper chimney section), aligning the centre (notch) with the vertical line.
- Mark the wall at the centres of the bracket holes.
- Drill \varnothing 8 mm holes at all the marked centre points.
- Insert the wall plugs **11** in the holes.
- Fix the brackets using the **12a** screws (4,2 x 44,4) supplied with the hood.

Fitting the Hood canopy

- Adjust the two screws **Vr**, in the brackets **11a**, so that they are at the start of their travel (**B**).
- Hook the hood body to the two brackets **11a**.
- Connect the Hood to the Mains Power Supply, inserting a bipolar switch with a contact aperture of at least 3mm.
- Open the top panel. (See the paragraph on USE)
- Open the Bottom Door by pulling it downwards with your hands.
- Remove the Metal Grease Filters using the handles provided.
- From the inside of the hood body, turn screws **Vr** to level the hood body itself.



Warning: should the rear wall not be completely flat and cause the two glass panels not to be aligned, pls turn on the two knobs in the lower part inside the hood body until you reach the perfect alignment of the two glass panels.

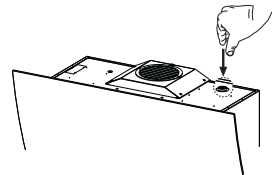
- Fasten the safety screw **11**.
- Replace the Metal Grease Filters, then shut the top panel. (See the paragraph on USE)
- Disconnect the hood from the mains power supply.

Warning: Should the door encounter an obstacle while opening or closing it will block. When the obstacle is removed and the button is pressed again the door will open.

Warning: In the event of a malfunction, check the fuse.

Replacing the fuser

- The fuser is placed up on the right side. Turn the fuser holder as indicated. Replace the fuser with one having the same features.

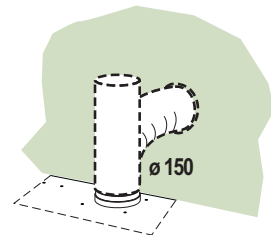


Connections

DUCTED VERSION AIR EXHAUST SYSTEM

When installing the ducted version, connect the hood to the chimney using either a flexible or rigid pipe \varnothing 150 mm, the choice of which is left to the installer.

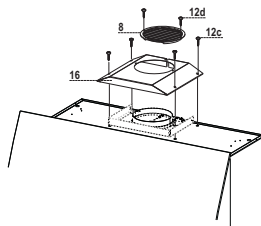
- Fix the pipe in position using sufficient pipe clamps (not supplied).
- Remove any activated charcoal filters.



RECYCLING VERSION AIR OUTLET

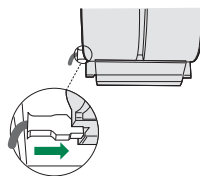
To install the hood in recycling version, the optional charcoal filter kit must be purchased.

- Remove the chimney angle bracket.
- Screw the filter cover onto the air outlet, using four screws **12c** (2,9 x 12,5).
- Fix the air outlet grid **8** on the recirculation air outlet using the 2 screws **12d** (2,9 x 9,5) provided.



ELECTRICAL CONNECTION

- Connect the hood to the mains supply.
- Open the upper panel by pressing the **A**-key (See Part “USE”) for at least 2 seconds.
- Remove the metal filters (See Part “MAINTENANCE”) and make sure that the connector piece of the supply cable is correctly inside the hood socket.



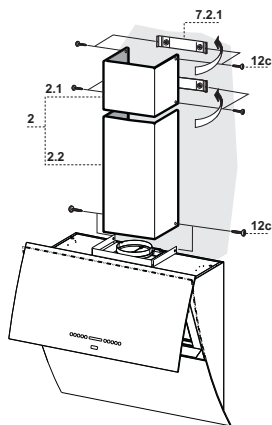
Chimney assembly

Upper exhaust Chimney

- Slightly widen the two sides of the upper chimney and hook them behind the brackets **7.2.1**, making sure that they are well seated.
- Secure the sides to the brackets using the 4 screws **12c** (2,9 x 9,5) supplied.

Lower exhaust Chimney

- Slightly widen the two sides of the chimney and hook them between the upper chimney and the wall, making sure that they are well seated.
- Fix the lower part laterally to the hood body using the 2 screws **12c** (2,9 x 9,5) supplied.



USE

Control panel



- When power is supplied to the hood, LED **A** flashes for approximately 10 seconds; during this time the interface is not enabled.
- When the control panel functions are not active only button **A** can be seen. When this is pressed all the other commands become visible.
- The functions selected are shown by backlighting the button at maximum intensity, while the other buttons are lit at reduced intensity.
- If all the functions are off the panel will switch off after 30 seconds, or when button **A** is pressed.

Button	Function	Display
A	Press briefly to turn the motor Off.	The LED on button A is on fixed (when the motor is on)
	Press and hold the button for approximately 4 seconds, with all the loads turned off (Motor and Lights) and no alarms triggered, to turn the Remote control on/off. The procedure can be activated with the door in any position.	The LEDs on buttons A and B flash twice to indicate that the remote control is on; The LEDs on buttons A and B flash once to indicate that the remote control is off;
B	Press briefly to activate speed one.	LED on button B is on fixed
	Press and hold for 2 seconds to activate the 24h function in which the motor turns on at a speed that allows suction for 10 minutes every hour; at the end of the 24h the function is deactivated. To deactivate it, press and hold button B again for 2 seconds, or press button A or button H .	LED on button B flashes (every 0.5 seconds during the 10 minutes on and every 2 seconds during the 50 minutes off)
C	Activates speed two.	LEDs on buttons C and A are on fixed
D	Activates speed three.	LEDs on buttons D and A are on fixed
E	Press briefly to activate speed four.	LEDs on buttons E and A are on fixed
	Press and hold for 2 seconds to activate Intensive speed. This speed is timed to run for 10 minutes. At the end of this time the system will automatically return to the speed set before. Cannot be activated if the Delay or 24H functions are active. It is disabled by pressing any of the Speed buttons or turning the Motor off.	LED on button E on (flashes every second) and LED on button A on fixed
F	Press briefly to turn the DELAY on/off; this enables automatic shutdown of the Motor and the Lighting with a 30' delay. Can be activated with the motor on (unless intensive or 24H is running).	LED on button F on fixed if the function is activated
	Press and hold the button for approximately 4 seconds, with all the loads turned off (Motor and Lights), to turn the Activated Charcoal Filter alarm on. To turn it off, press and hold the button again for 4 seconds.	The LEDs on buttons F and B flash twice The LEDs on buttons F and B flash once
	With the filter alarm triggered, press the button briefly to Reset the alarm. These signals are only visible with the motor turned off and the control panel active. The Reset is signalled by the fact that LED F turns off.	After 100 hours operation the Led on button F lights up continuously to indicate saturation of the Metal Grease Filters. After 200 hours in operation the Led on button F flashes to indicate saturation of the Activated Charcoal filters.
G	Press briefly to turn the Secondary Lights (spotlights) on and off at maximum intensity. The button is also active with the door closed.	LED on button G is on fixed
	Press and hold the button for 2 seconds to turn the Courtesy Lights On	LED on button G is on fixed
H	Door Closed: - Press and hold for approximately 2 Seconds to open the door, turn the motor on at the last speed set and turn the Main lights (LEDs) on.	LED on button H is on fixed when the main lights are turned on.
	Door Open: - Press briefly to turn the Main lights (LEDs) On or Off. - Press for 2 seconds to turn everything off (Motor and Main lights) and close the door.	

REMOTE CONTROL (OPTIONAL)

The appliance can be controlled using a remote control powered by a 1.5 V carbon-zinc alkaline batteries of the standard LR03-AAA type (not included).

- Do not place the remote control near to heat sources.
- Used batteries must be disposed of in the proper manner.



Remote control panel



⏻	Motor	Door Closed: Opens the door, turns the motor on at the last speed set and turns the lights on.
		Door Open: press briefly to turn the Motor On/Off.
		Door Open: press for 2 seconds to turn the Motor and the main lights off and close the door.
—		Decreases the working speed each time it is pressed.
+		Increases the working speed each time it is pressed.
ⓘ	Intensive	Activates Intensive mode (activated with the door open).
⌚	Delay/24H	Press briefly to activate the Delay function.
		Pressed for 2 Seconds: Activates / Deactivates 24H mode (activated with the door open).
☀	Light	Door Open: press briefly to turn the main lights On/Off.
		Door Open: press for 2 seconds to turn secondary lights On / Off.

MAINTENANCE

Metal grease filters

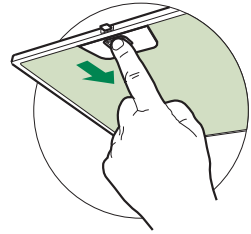
These filters can be washed in a dishwasher, and need to be cleaned when the Button **F** LED on the display lights up in a continuous manner or at least once every approximately two months' use, or more frequently in the case of particularly intensive use.

Resetting the alarm signal

- With the filter alarm on, press button **F** briefly (see the paragraph on USE).

Cleaning the Filters

- If closed, open the door by pressing button **H** and holding for approximately 2 seconds (see USE).
- Remove the Filters one at a time, pushing them towards the back of the unit and at the same time pulling downward.
- Wash the Filters without bending them, and leave them to dry completely before replacing. (If the surface of the filter changes colour as time goes by, this will have absolutely no effect on the efficiency of the filter itself.)
- Replace, taking care to ensure that the handle faces forwards.



Activated Charcoal Filter (Recirculation Version)

This cannot be washed or regenerated, and must be changed when the **F** button LED on the display starts to flash, or at least once every 4 months. The Alarm signal must be activated in advance.

Activating the alarm signal

- In Recirculation Version Hoods, the Filter Saturation Alarm must be activated on installation or at a later date.
- Turn the Lights and the Suction Motor off.
- Press **F** and hold for approximately 4 seconds, after which:
 - The LEDs on buttons **F** and **B** flash twice: Activated Charcoal filter saturation alarm ACTIVATED
 - The LEDs on buttons **F** and **B** flash once: Activated Charcoal filter saturation alarm DEACTIVATED

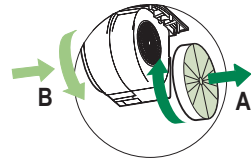
CHANGING THE ACTIVATED CHARCOAL FILTER

Resetting the alarm signal

- With the filter alarm on, press button **F** briefly (see the paragraph on USE).

Changing the Filter

- If closed, open the door by pressing button **H** and holding for approximately 2 seconds (see USE).
- Remove grease filters.
- Remove the saturated activated charcoal filters, as indicated (A).
- Fit the new filters, as indicated (B).
- Replace the metal grease filters.

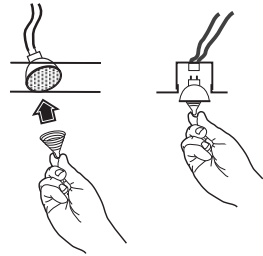


Lighting

LIGHT REPLACEMENT

20 W halogen light.

- Extract the lamp from the lamp holder by pulling gently.
- Replace with another of the same type, making sure that the two pins are properly inserted in the lamp holder socket holes.



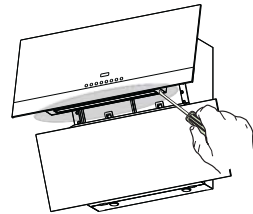
Lighting unit

REPLACING OF THE LED UNIT

LED

- To remove the lighting unit a screwdriver can be used in order to slightly press the side part of the unit.
- Remove the unit, remove the electrical connector and replace the unit with a new one. ("To purchase contact technical support")

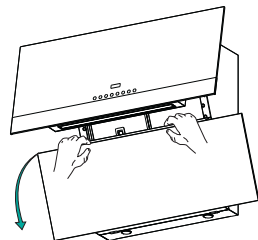
Warning: This appliance is fitted with a white LED lamp classed as 1M according to EN 60825-1: 1994 + A1:2002 + A2:2001 standards; maximum optical power emitted @439nm: 7 μ W. Do not look directly at the light through optical devices (binoculars, magnifying glasses...).



Cleaning the inside of the Hood

The inside of the hood must be cleaned regularly. To do this, proceed as follows:

- Open the Top Door (see USE).
- Open the Bottom Door by pulling it downwards with your hands.
- Clean the inside of the Hood.





Franke S.p.a.
Via Pignolini,2
37019 Peschiera del Garda (VR)
www.franke.it

436005650_ver1