

FRANKE OMNI 4-IN-1 SYSTEM

Changing the filter cartridge

Cartridge replacement cycle

The recommended filter cartridge change cycle is 6 months

Important: The period between cartridge replacements is not guaranteed; it is an estimate based on filtering mains water of average quality. Please bear in mind that water quality varies from locality to locality and situation to situation. In areas with higher than average turbidity (particle contamination) more frequent cartridge changes may be necessary.

Preparation

No special tools are required for this operation. All you will need is a suitable receptacle to catch any spillage and a cloth or a sponge handy. A rubber glove is provided to hold the wet cartridge.

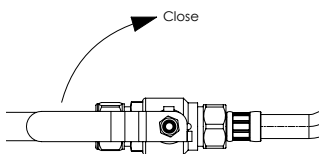
Lubricating the rubber seals

For ease of assembly we recommend that a film of silicone grease is applied to the filter housing 'O' Seal, at least every other cartridge change, to maintain the smooth operation of the unit. **Important note:** Only a WRAS approved silicon lubricant should be used for this purpose. Small tubes of a WRAS approved silicon grease can be purchased from Franke FilterFlow at www.frankefilterflow.co.uk

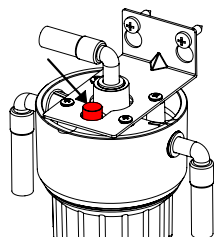
Disposing of the spent cartridge

You may dispose of the cartridge in your normal household waste. The carbon components of the Franke O8 cartridge are biodegradable. You are welcome to return either the plastic parts or the complete cartridge to Franke FilterFlow for recycling. Should you decide to return the cartridge please allow it to dry naturally and return it in the original packaging.

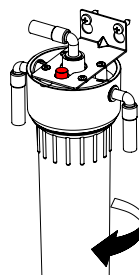
Most Important! - before you start: Operate the switch on the front of the boiler to switch off the boiler power supply.



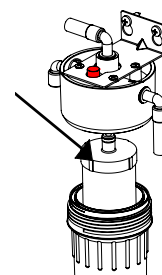
1. Shut off the water supply to the filter using the adjacent stop-valve.



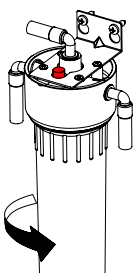
2. Press the red button at the top of the filter unit to exhaust the pressure in the system. It will not be possible to unscrew the filter canister if this operation is not carried out.



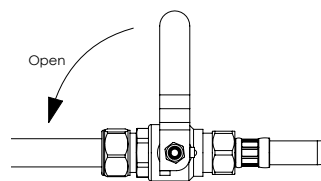
3. Place a shallow container in the cabinet to catch any water residues when removing the filter sump. Grip the sump firmly and turn it firmly to the left to break the seal. Unscrew the sump by hand until it separates from the head of the filter.



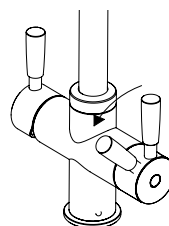
4. If the old cartridge does not automatically fall free press down on the top mount of the cartridge to release it. Remove the old cartridge and discard the remaining water in the sump.



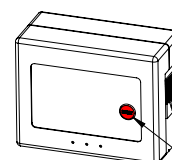
5. Remove the new filter cartridge from its packaging, wet the "O" seal and place it in the filter sump. Position the sump, with the cartridge inside, under the filter head and screw it in place. The cartridge should engage automatically. Tighten the sump sufficient to make a water tight seal.



6. Turn the water supply 'on' and check the system carefully for leaks.



7. Operate the system and run the filtered water for a few moments until the water runs clear. Run the boiling water for a moment to release any trapped air. Turn the boiler power supply back on.



8. Press and hold the reset button on the filter change indicator module for 5 seconds. The LED light on the tap will glow red, followed by yellow, and then the module will emit an audible beep. The filter change indicator is now reset.